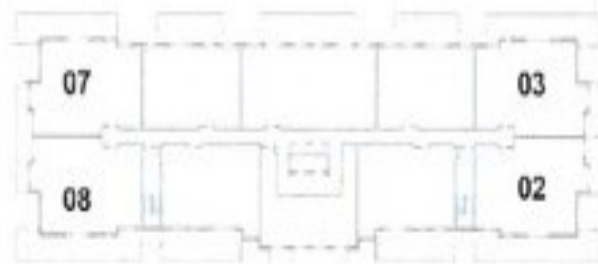


# Suite A: Two-Bedroom with Den or Three Bedroom



Front

**\$2,800.00**  
to  
**\$3,800.00**

## Suite A

Level 100 - 900

Net Suite Area

2130 sq. ft

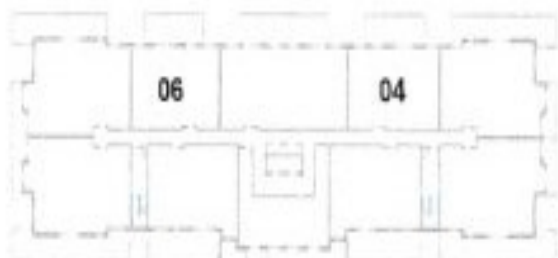
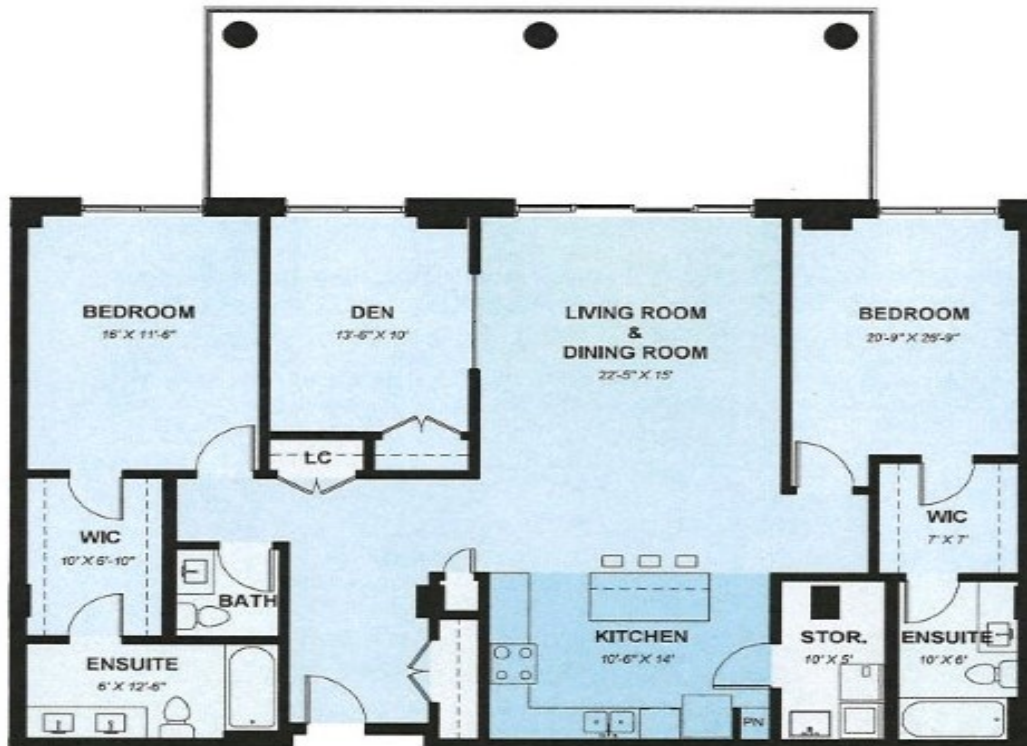
Balcony 155/840 sq. ft

Units 102-902; 103-903;

107-1007; 108-1008

Dimensions are approximate In all areas

# Suite B: Two-Bedroom with Den or Three Bedroom



Front

**\$2,000.00**  
To  
**\$3,800.00**

**Suite B**

**Level 100 - 900**

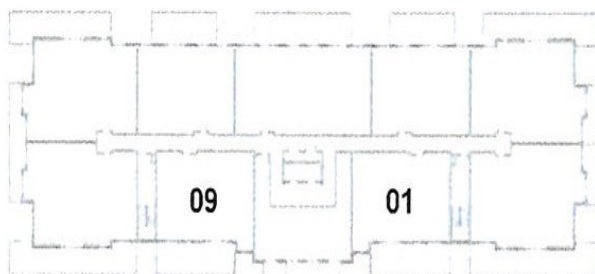
**Net Suite Area: 1712 sq. ft.**

**Balcony: 408 sq. ft**

**Suites 104-904; 106-906**

Dimensions are approximate In all areas

## Suite C: Two-Bedroom with Den



Front

**\$2,100.00**  
To  
**\$3,600.00**

**Suite C**

**Level 100-900**

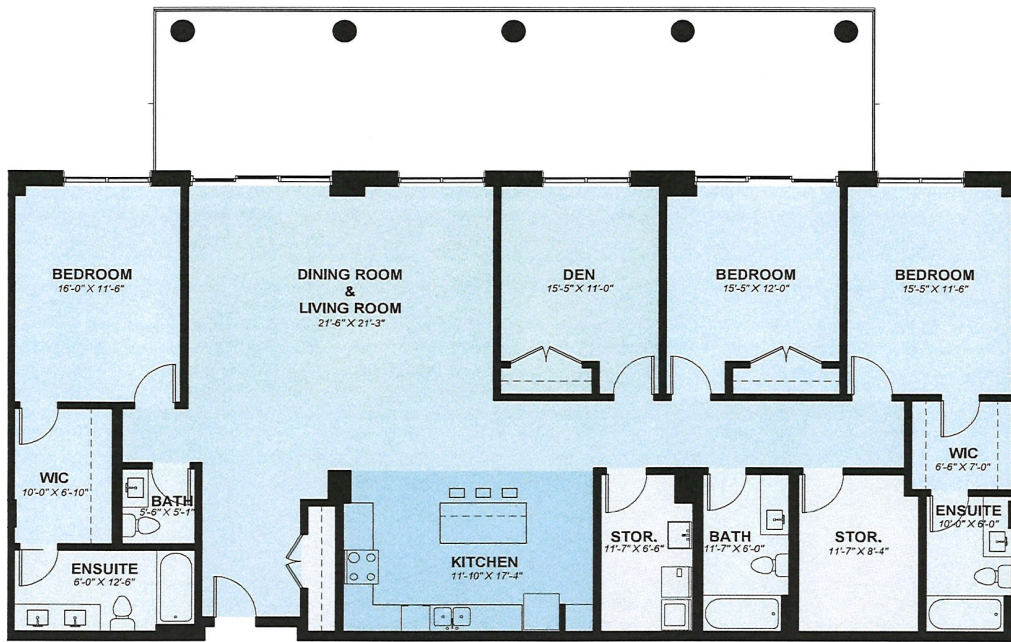
**Net Suite Area: 1714 sq. ft.**

**Balcony: 402 sq. ft.**

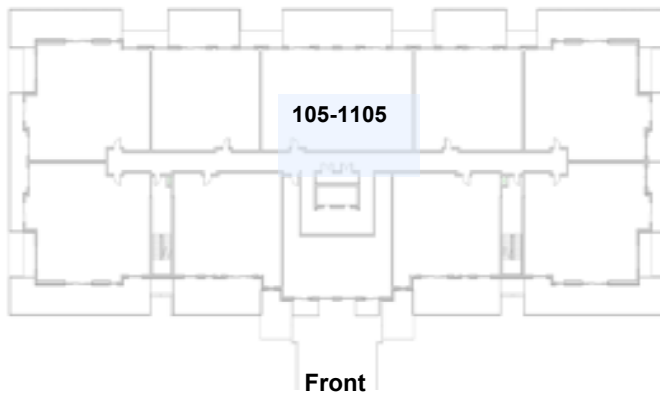
**Suites 101-901; 109-909**

Dimensions are approximate In all areas

# Suite D: Three-Bedroom with Den/4 Bed



**\$2,900.00  
To  
\$3,700.00**



**Suite D**

**Level 100 - 1100**

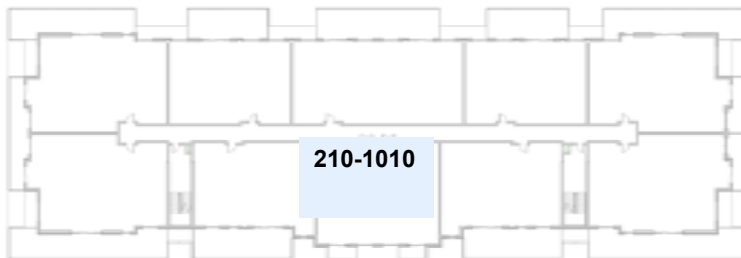
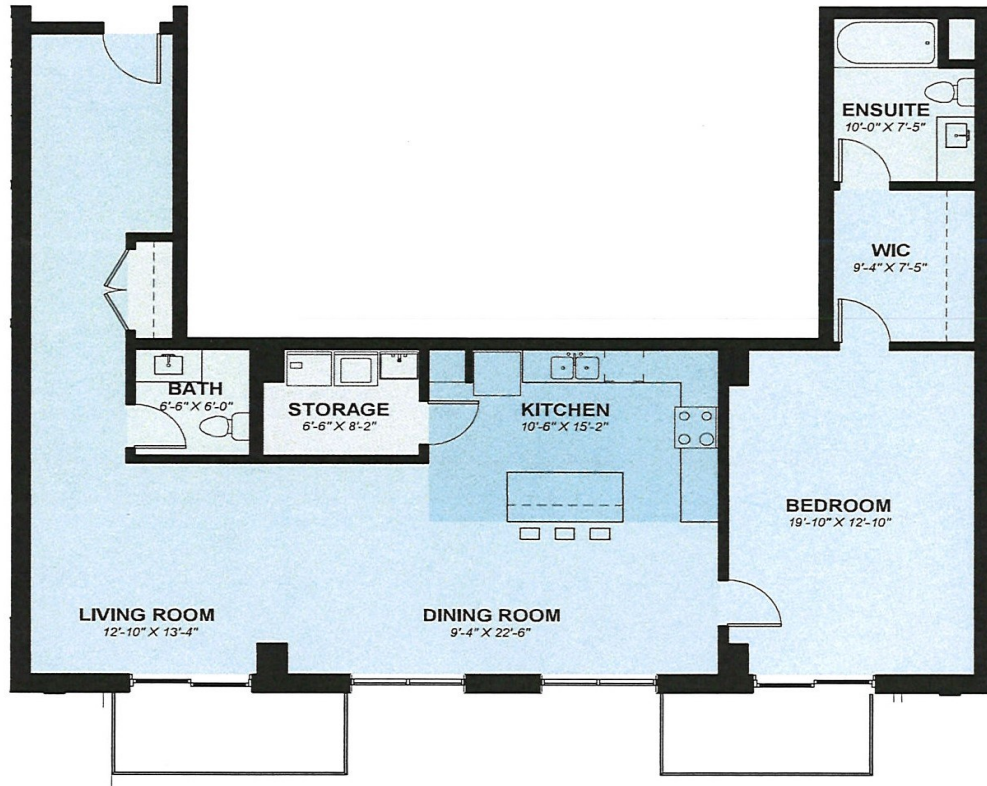
**Net Suite Area: 2394 sq. ft.**

**Balcony: 605 sq. ft.**

**Suites 105-1105**

**Dimensions are approximate in all areas**

# Suite E: One Bedroom



Front

**\$1,600.00**  
To  
**\$2,075.00**

**Suite E**

**Level 200 - 1000**

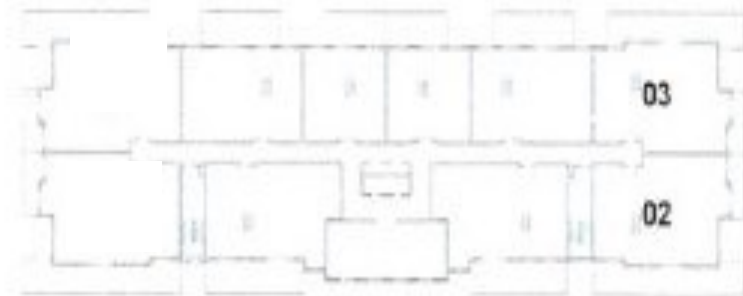
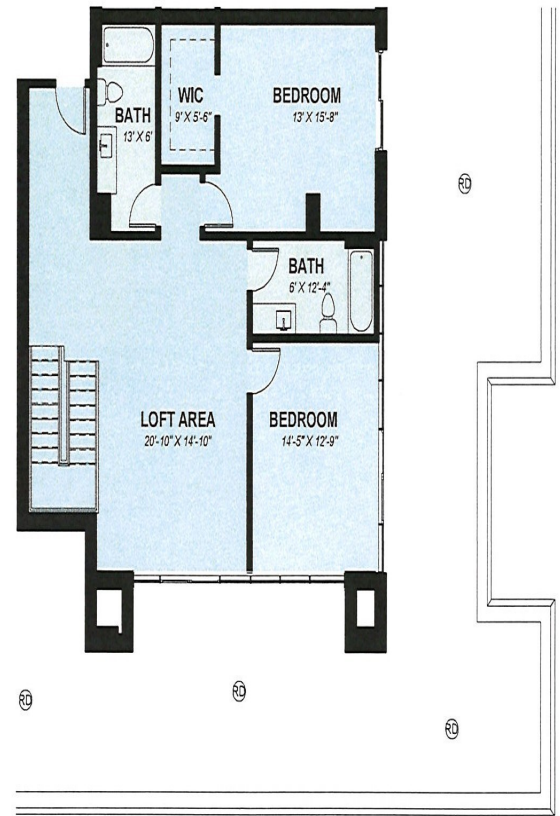
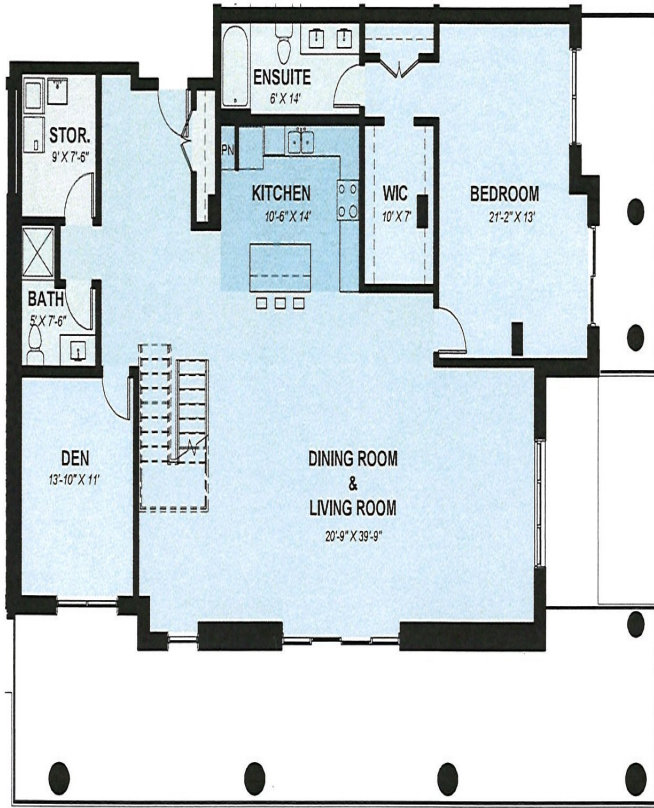
**Net Suite Area: 1384 sq. ft.**

**Balcony: 300 sq. ft**

**Suites 210-1010**

Dimensions are approximate In all areas

# Penthouse 1: Three-Bedroom with Loft Area (Bedroom/Den)



Front

**\$3,800.00**

## Suite - Penthouse 1

Level 1000 and 1100

Suite Area

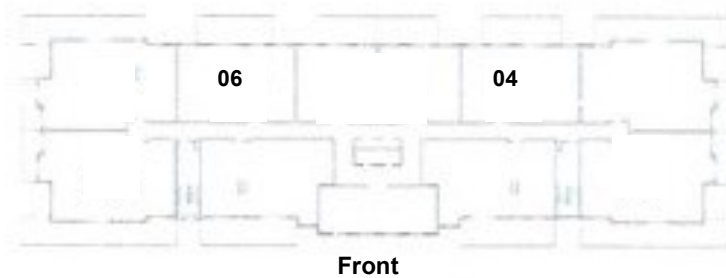
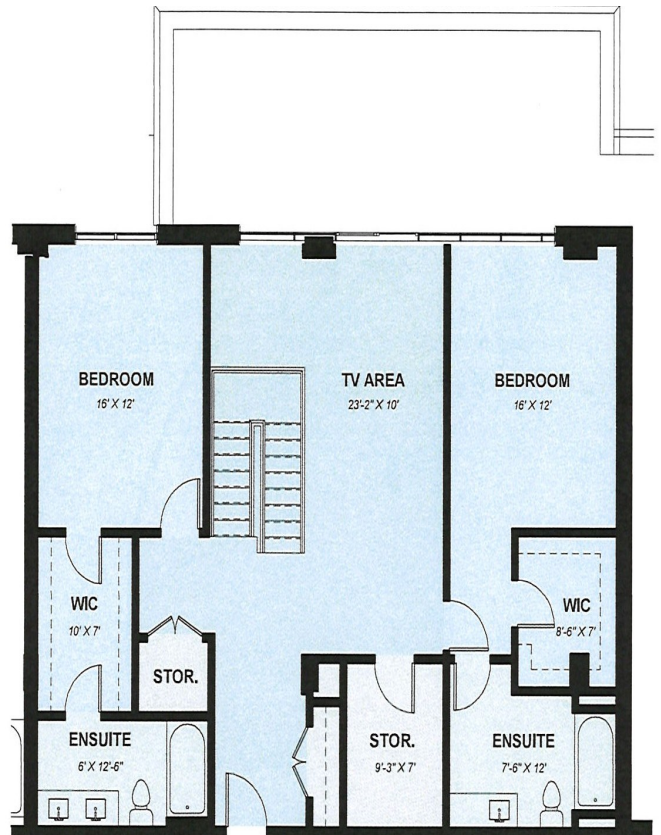
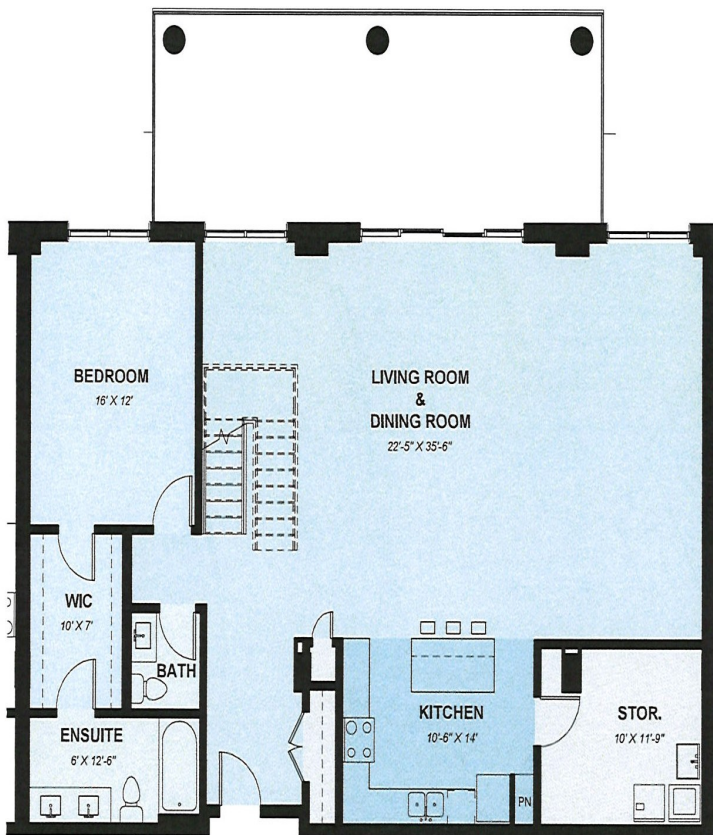
2117 sq. ft. 10th floor

1173 sq. ft. 11th floor

Balcony Area

155 / 791 / 1063 sq. ft.

## Penthouse 2: Three-Bedroom with Loft Area/or Den-(2 Level)



### Suite - Penthouse 2

Level 1000 and 1100

**\$3,700.00**

#### Suite Area

1172 sq. ft. 10th floor

1502 sq. ft. 11th floor

2674 total sq. ft.

Balcony Area

## Penthouse 3: Three-Bedroom + Den (2 Level)



**\$3,700.00**

### Suite - Penthouse 3

Level 1000 and 1100

Suite Area

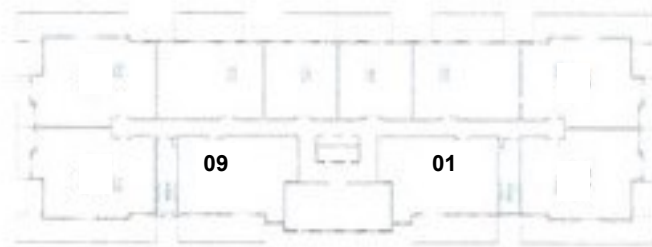
1860 sq. ft. 10th floor

1795 sq. ft. 11th floor

3655 total sq. ft.

Balcony Area

155 / 791 / 1063 sq. ft.



Front